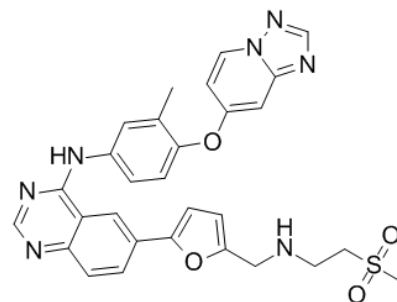


Product Name : ARRY-380 analog
Cat. No. : PC-42641
CAS No. : 937265-83-3
Molecular Formula : C₂₉H₂₇N₇O₄S
Molecular Weight : 569.6342
Target : EGFR
Solubility : 10 mM in DMSO



Biological Activity

An analog of ARRY-380, a potent and selective HER2 inhibitor with IC₅₀ of 8 nM; displays 500-fold selectivity over EGFR.

References

Caution: Product has not been fully validated for medical applications. Lab Use Only!

E-mail: tech@probechem.com